

**Staying in the Hook area this Summer?**

**Check Out More Hook services:**

New Ross Monday & Thursday  
Wexford Wednesday & Saturday  
Including late night service to/from Wexford on a Saturday night.

To find out more call us on 053 919 6276 / 6279 or find our timetables on [www.localinkwexford.ie](http://www.localinkwexford.ie)

**HOP ON AND HOP OFF AROUND THE HOOK PENINSULA TO MAXIMISE YOUR DAY**

Tintern Abbey	Car Park	11:35	12:30	15:15	16:15
Saltmills	Vine Cottage	11:40	12:35	15:20	16:20
Fethard on Sea	Castle	11:50	12:45	15:25	16:25
Baginbun & Carnivan beaches		11:55	12:50	15:30	16:30
Hookless	Village Gates	12:00	12:55	15:35	16:35
Hook Lighthouse	Car Park	12:10	13:05	15:40	16:40
Loftus Hall	Car Park (when open)	12:15	13:10	15:55	16:55
Boyces, Dollar, Booley bay		12:20	13:15	16:00	17:00
Duncannon	Strand Wall (Via Boyces, Dollar & Booley bay's)	12:30	13:25	16:10	17:10

**HOP ON AND HOP OFF AROUND THE HOOK PENINSULA TO MAXIMISE YOUR DAY**

Duncannon	Strand Wall (Via Boyces, Dollar & Booley bay's)	11:30	12:30	13:30	16:15
Booley, Dollar & Boyces bay		11:35	12:35	13:35	16:20
Loftus Hall	Car Park (when open)	11:45	12:45	13:45	16:30
Hook Lighthouse	Car Park	11:50	12:50	13:50	16:40
Hookless	Village Gates	12:00	12:55	13:55	16:50
Carnivan & Baginbun beaches		12:05	13:00	14:00	16:55
Fethard on Sea	Castle	12:10	13:05	14:05	17:00
Saltmills	Vine Cottage	12:15	13:10	14:10	17:05
Tintern Abbey	Car Park	12:20	13:20	14:20	17:10

The hop on hop off service follows a route with fixed stops around the Hook Peninsula. This service allows passengers with a day ticket unlimited travel for a day with the freedom to disembark at any stop and reboard another TFI Local Link bus to continue to another location or continue on to New Ross or Wexford. For more information on what to see and do on the Hook Peninsula, visit [hookpeninsula.com/explore](http://hookpeninsula.com/explore)



For more information



Email: [wexford@localink.ie](mailto:wexford@localink.ie)  
Tel: 053 919 6276 / 053 919 6279  
Web: [www.localinkwexford.ie](http://www.localinkwexford.ie)  
Message: @localinkwexford/fb



TFI Local Link Wexford  
Whitemills Industrial Estate  
Clonard Road  
Wexford Y35 FT89



**Fares**  
Holders of Free Travel Pass and Children up to 5 years travel for FREE on all Local Link services

Fare Type	Day Ticket	Single
Child	€5	€3
Student	€5	€3
Adult	€10	€5
Family (2 Ad & 2 Ch)	€25	-

Tickets can be purchased on the bus.  
Please have the correct fare ready.

All times subject to change.

Summer service starts **21.06.2021** to **26.09.21**

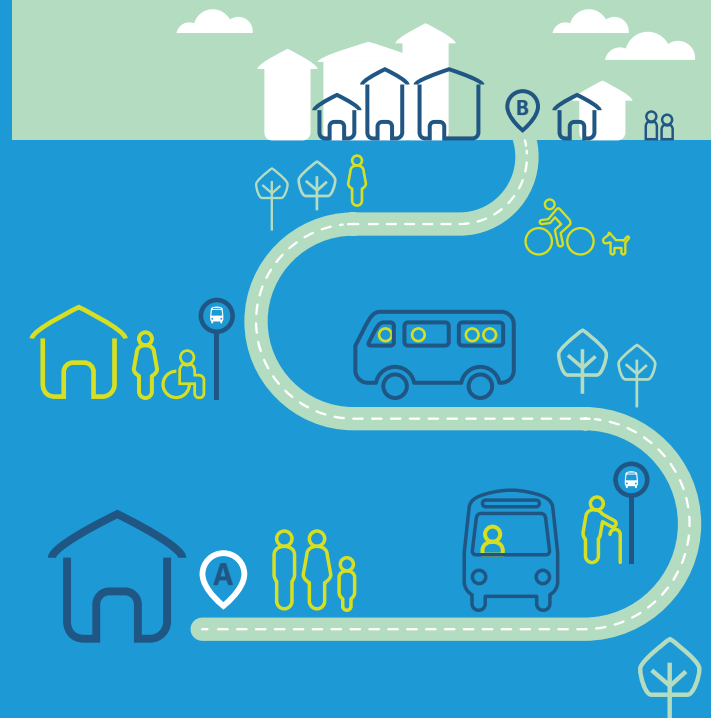
Information correct at the time of print: **June 2021**



Routes

**Hook Peninsula Summer Service 2021**

New Ross to Hook Peninsula  
Wexford to Hook Peninsula



## Summer Weekend Services to the Hook Peninsula from New Ross or Wexford

2021: Month of June & September every Saturday & Sunday. Month of July & August every Friday, Saturday, Sunday & Bank Holiday

NEW ROSS TO HOOK DIRECTION			
Departs	Stops	Times	
New Ross	Supervalu	11:00	-----
New Ross	Brandon House	11:10	-----
Duncannon	Strand Wall	11:30	13:30
Via Booley, Dollar & Boyces bay's		11:35	13:35
Loftus Hall	Car Park (when open)	11:45	13:45
Hook Lighthouse	Car Park	11:50	13:50
Hookless	Village Gates	12:00	13:55
Via Carnivan & Baginbun beaches		12:05	14:00
Fethard on Sea	Castle	12:10	14:05
Saltmills	Vine Cottage	12:15	14:10
Tintern Abbey	Car Park	12:20	14:20

WEXFORD TO HOOK DIRECTION			
Departs	Stops	Times	
Wexford	Redmond Square	11:00	14:45
Wellingtonbridge	Tír na nÓG	11:20	15:05
Tintern Abbey	Car Park	11:35	15:15
Saltmills	Walk to Tintern	11:40	15:20
Fethard on Sea	Castle	11:50	15:25
Via Baginbun & Carnivan beaches		11:55	15:30
Hookless	Village Gates	12:00	15:35
Hook Lighthouse	Car Park	12:10	15:40
Loftus Hall	Car Park (when open)	12:15	15:55
Via Boyces, Dollar & Booley Bay's		12:20	16:00
Duncannon	Strand Wall	12:30	16:10

HOOK TO NEW ROSS DIRECTION			
Departs	Stops	Times	
Tintern Abbey	Car Park	12:30	16:15
Saltmills	Vine Cottage	12:35	16:20
Fethard on Sea	Castle	12:45	16:25
Via Carnivan & Baginbun beaches		12:50	16:30
Hookless	Village Gates	12:55	16:35
Hook Lighthouse	Car Park	13:05	16:40
Loftus Hall	Car Park (when open)	13:10	16:55
Via Boyces, Dollar & Booley bay's		13:15	17:00
Duncannon	Strand Wall	13:25	17:10
New Ross	Brandon House	-----	17:30
New Ross	Quay Side	-----	17:35

HOOK TO WEXFORD DIRECTION			
Departs	Stops	Times	
Duncannon	Strand Wall	12:30	16:15
Via Booley, Dollar & Boyces bay's		12:35	16:20
Loftus Hall	Car Park (when open)	12:45	16:30
Hook Lighthouse	Car Park	12:50	16:40
Hookless	Village Gates	12:55	16:50
Via Carnivan & Baginbun beaches		13:00	16:55
Fethard on Sea	Castle	13:05	17:00
Saltmills	Walk to Tintern	13:10	17:05
Tintern Abbey	Car Park	13:20	17:10
Wellingtonbridge	Opp Tír na nÓG	13:35	17:20
Wexford	Redmond Square	13:55	17:45